

# EE150

## Humidity and Temperature Transmitter for HVAC Applications

ddm l g u c d h f i d l g u c g g u c d g e v g u c h d e y H D □  
 i b f g g b c h l m i g g e h h u f b u o h g u f b g e f b i h □  
 i h d a g b y f e g h l b 5 b l f i l m u l d h i p b h g e v g u c □  
 i b g u c u o h g h c b g e g h f i l m u l d □  
 m l g h e g f d h l g h c g h i m o h g h c e h h g h c □  
 l b e v g h l v x b a s b l h c h l a y a g g b c □  
 D h f i d l g u c d h i m 3 1 0 b a n g b a g x s c l e b f i □  
 m i h s x l m l g h d m n b e v i b a n l h i e l 3 h i b l □  
 a s b l m h l a y a g g b y g r g b h l b y i n d i e g b y i h a e y x l □  
 m l g e b l v l b d g h l d u y d u r d m l i h o g y l w e d l h g b d m □  
 h l a y a g g b y h f y f n g l □  
 l b i h f h s b h i h e g b l e v g h h h m h g b y b l h f n g h □  
 f h l h y l e v g h g h l b l v u o h g h c b g e l b d i h d g e f □  
 e g h i b b i l m u □



EE150



Heating, ventilation, air conditioning  
 Building management



IP65/NEMA 4 compact enclosure  
 Ø 6 mm stainless steel probe  
 Free scaleable outputs  
 Resistance against pollutants  
 Free configuration software

### Technical data

#### Measured values

##### Relative Humidity

Working range	10...90 % RH
Accuracy at 20 °C	±3 % RH (30...70 % RH), otherwise ±5 % RH
Temperature dependency	typ. ±0.05 % RH/°C

##### Temperature

Working range	-5...55 °C (23...131 °F)
T-Accuracy at 20 °C	±0.3 °C



#### Outputs

Analog output	0-10 V	$R_L \geq 10 \text{ kOhm}$
	(0...100 % RH; T: see ordering guide)	4-20 mA (two-wire) $R_L \leq 500 \text{ Ohm}$

##### Passive T-sensor

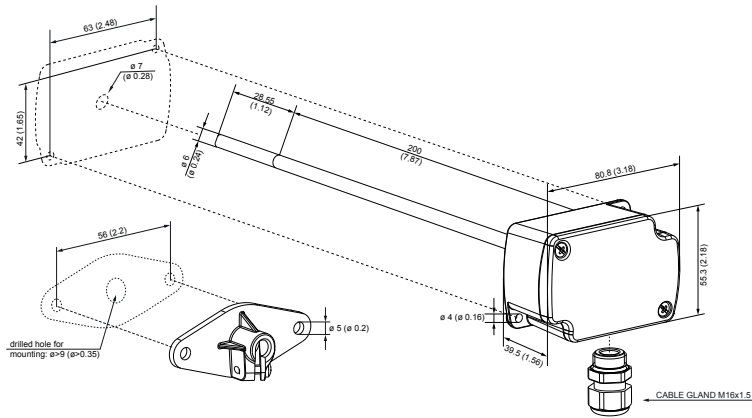
2-wire	see ordering guide
Wires resistance (terminal - sensor)	typ. 0.5 Ohm

#### General

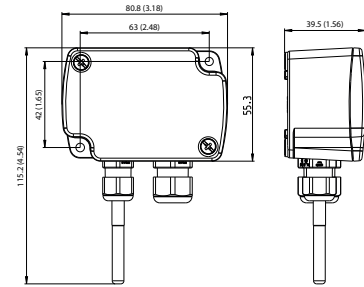
Power supply (Class III) 	for 0 - 10 V	15 - 35 V DC or 24 V AC ±20 %
	for 4 - 20 mA	$10 \text{ V} + R_L \times 20 \text{ mA} < U_V < 35 \text{ V DC}$
Current consumption	with DC power supply	typ. 5 mA
	with AC power supply	typ. 13 mA <sub>eff</sub>
Connection	Screw terminals, max. 1.5 mm <sup>2</sup>	
Housing material	Polycarbonate, UL94V-0 approved	
Protection class	IP65 / NEMA 4	
Cable gland	M16 x 1.5 / UL94-V2	
Sensor protection	PTFE filter, non-removable	
Electromagnetic compatibility	EN61326-1	Industrial environment
	FCC Part 15 Class B	ICES-003 Issue 5 Class B 
Working conditions	-5...55 °C (23...131 °F)	0...95 % RH (non-condensing)
Storage conditions	-25...60 °C (-13...140 °F)	20...80% RH

## Dimensions (mm/inch)

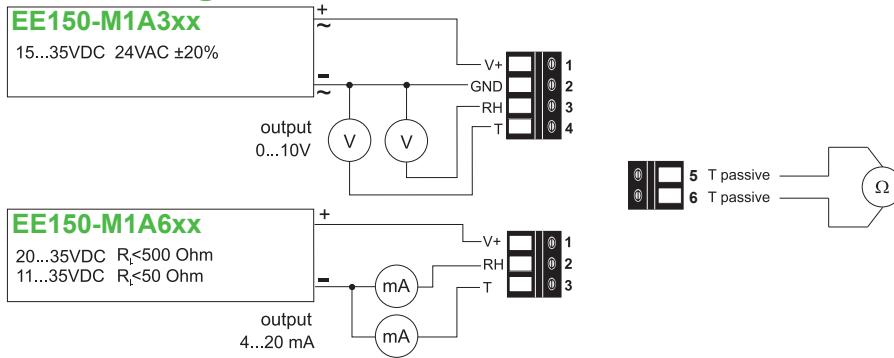
### Duct mount



### Wall mount



## Connection diagram



## Ordering Guide

		EE150-
Model	Humidity + Temperature	M1
Output RH / T	0-10 V 4-20 mA	A3 A6
Additional T-Sensor passive <sup>1)</sup>	none Pt100 DIN A Pt1000 DIN A NTC10k Ni1000 TK6180	no code TP1 TP3 TP5 TP9
Type	Duct mount Wall mount	no code T1
T-Unit	°C °F	no code MB2
T-Scale low	0 Value <sup>2)</sup>	no code SBL value
T-Scale high	50 Value <sup>2)</sup>	no code SBH value

1) T-Sensor details see [www.epluse.com/R-T\\_Characteristics](http://www.epluse.com/R-T_Characteristics)

2) Within working range. For scaling beyond working range limits please contact the E+E sales representative.

## Order example

### EE150-M1A6TP1

Model: Humidity + Temperature  
Output RH / T: 4-20 mA  
Additional T-Sensor passive: Pt100 DIN A  
Type: Duct mount  
T-Unit: °C  
T-Scale low: 0  
T-Scale high: 50

### EE150-M1A6TP1T1MB2SBL-5SBH55

Model: Humidity + Temperature  
Output RH / T: 4-20 mA  
Additional T-Sensor passive: Pt100 DIN A  
Type: Wall mount  
T-Unit: °F  
T-Scale low: -5  
T-Scale high: 55

## Accessories

---

Product configuration adapter	see data sheet EE-PCA
Product configuration software	EE-PCS (free download: <a href="http://www.epluse.com/EE150">www.epluse.com/EE150</a> )
Power supply adapter	V03 (see data sheet Accessories)
Conduit adapter, M16x1.5 to 1/2"	HA011110

## Scope of Supply

---

- EE150 Humidity and Temperature Transmitter
- Cable gland
- Mounting flange (only at duct mount version)
- Test report according to DIN EN10204 - 2.2